



# MONTHLY MEMBERSHIP PROGRESS REPORT

District 18 L

Results as of: 3/31/2017

GMT: HARVEY WHITLEY

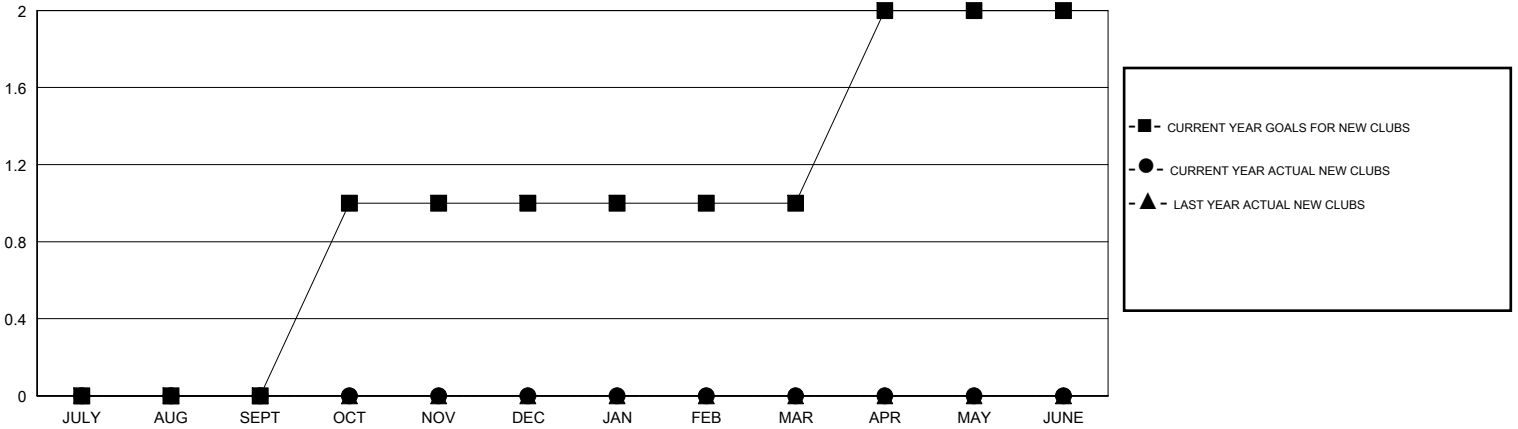
LOCATION GEORGIA

GMT CA

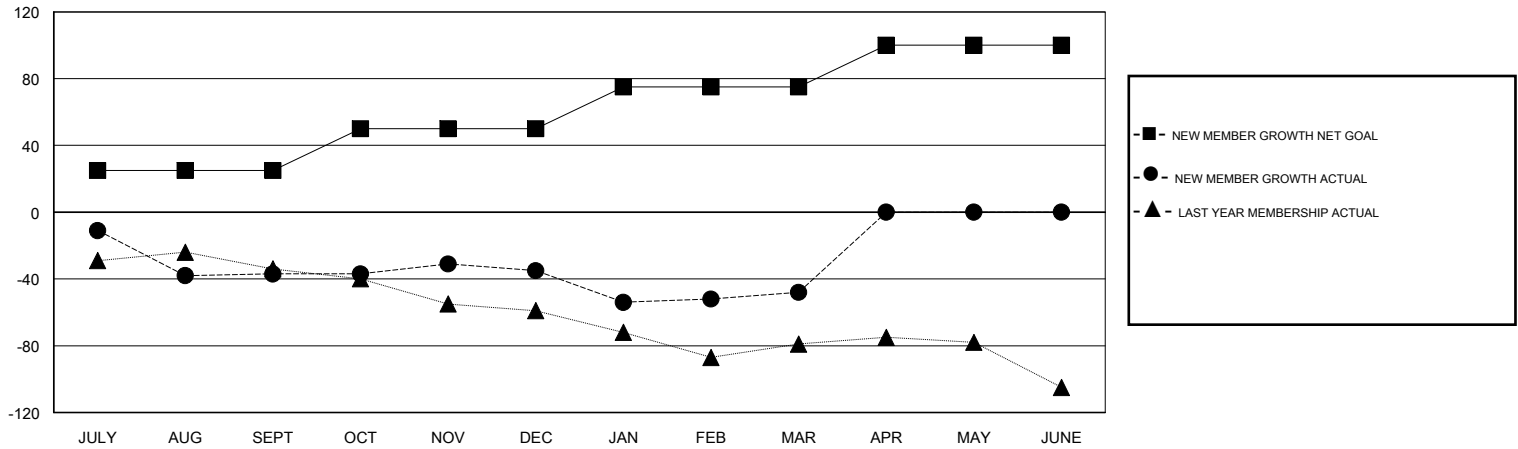
Clubs			
RESULTS FOR 2016-2017			
QUARTER	NEW CLUB GOAL	NEW CLUBS	DROPPED CLUBS
JULY/AUG/SEPT	0	0	0
OCT/NOV/DEC	1	0	0
JAN/FEB/MAR	0	0	0
APR/MAY/JUNE	1	0	0

Members			
RESULTS FOR 2016-2017			
QUARTER	NEW MEMBER GROWTH NET GOAL (not reinstated or transfers)	NEW MEMBER GROWTH ACTUAL (not reinstated or transfers)	DROPPED MEMBERS ACTUAL (including transfers)
JULY/AUG/SEPT	25	59	96
OCT/NOV/DEC	25	19	17
JAN/FEB/MAR	25	31	44
APR/MAY/JUNE	25	0	0

GOALS AND ACTUAL NEW CLUBS CUMULATIVE



GOALS AND ACTUAL MEMBERS CUMULATIVE



DROPPED CLUBS: 0	31 CLUBS OF 48 ADDED 1 OR MORE NEW MEMBERS	<u>GENDER DISTRIBUTION</u>	
DROPPED MEMBERS		MALE	867 (65.34%)
DECEASED	17	FEMALE	460 (34.66%)
CLUB CANCELLED	0	TOTAL FAMILY UNIT MEMBERS	
OTHER	140	237	
TOTAL	157	FAMILY MEMBERS PAYING HALF DUES	
		122	

[CLICK HERE FOR CUMULATIVE MEMBERSHIP DATA](#)